

# Baked Bros

IMPACT. CONSISTENCY. EXCELLENCE.

## Product Testing Cover Page

### Product Information

Product Name:	Brix Strawberry Watermelon Gummie 100mg
Batch ID:	BR100SW-12
MMJ Weight:	0.1g
Product Form:	Gummies
Strain:	Hybrid

### Distribution Chain

Type:	Distillate
Cultivated By:	00000100DCWU0087159 P1 Capital Group LLC
Cultivated Date A:	06/02/2024
Cultivated Date B:	05/08/2024
Cultivated Date C:	N/A
Extraction By:	0000025DCPT0084389 Total Accountability Patient Care Inc.
Extraction Manufacturing Date:	06/28/2024
Extraction Method:	Alcohol
Edible manufactured By:	00000005ESIN89499585 Kwerles Inc
Edible Manufacturing Date:	01/16/2025
Edible Use by Date:	01/16/2026
Packaged By:	00000005ESIN89499585 Kwerles Inc
Distributed By:	00000005ESIN89499585 Kwerles Inc

**Intended Point Of Sale**

00000139ESDD30084191 101010 Management LLC  
00000070ESCO78837103 203 Organix, Llc  
00000036ESXU42814428 4245 Investments Llc  
00000128ESJI00619914 46 Wellness Llc  
0000154ESTQI31348041 480 License Holdings, LLC  
00000116ESSM79524188 Abaca Inc.  
00000052ESLX15969554 Abedon Saiz Llc  
00000027ESMP88938972 Absolute Health Care Inc  
00000006ESWX56565424 Ad, Llc  
00000142ESIL74759395 AGI Management LLC  
00000033ESLY55591549 All Greens Inc  
00000131ESYX97720376 All Rebel Rockers Inc  
00000133ESGJ79432018 Apache County Dispensary LLC  
00000042ESJB38310180 Arizona Cannabis Society Inc  
00000067ESBS89254298 Arizona Golden Leaf Wellness, Llc  
00000096ESWI60030184 Arizona Natural Pain Solutions Inc.  
00000030ESDG72791381 Arizona Natures Wellness  
00000095ESIP13817359 Arizona Organix  
0000170ESTVQ68678199 Arizona Tree Equity 2  
00000044ESZW01555573 Arizona Wellness Collective 3, Inc  
00000054ESDU93884651 AZCL1  
00000076ESON21559195 Az Compassionate Care Inc  
0000148ESTMY68096274 AZ Flower Power LLC  
00000040ESDX57445071 AZGM 3, LLC  
0000150ESTPZ83854528 Blue Palo Verde 1, LLC  
00000022ESMC44584355 Border Health, Inc  
00000102ESWC76772229 Broken Arrow Herbal Center Inc  
00000028ESVU53788832 Buds & Roses, Inc  
00000003ESPF54627423 Byers Dispensary Inc  
00000144ESQK21738687 Cactus Bloom Facilities Management LLC  
00000104ESDH57805022 Cannabis Research Group Inc  
00000132ESFR75101840 Cardinal Square, Inc  
00000025ESOX62486193 Catalina Hills Botanical Care Inc  
00000106ESEU57773093 Cjk Inc  
00000135ESGE19332725 Cochise County Wellness, LLC  
00000091ESHS96689917 Compassionate Care Of AZ, Inc.  
00000127ESET80222360 Copper State Herbal Center Inc  
00000008DCJ00257791 CSI Solutions, Inc.  
00000012ESIS11195422 CSI Solutions, Inc.  
0000155ESTWD37312465 Curious Cultivators I LLC  
0000153ESTXW47689762 Desert Boyz  
00000038ESPN59181329 Desert Medical Campus Inc  
00000077ESTT45790153 Desertview Wellness & Healing Solutions, LLC  
00000026ESRZ88769978 Devine Desert Healing Inc  
00000078ESQG10647381 Dreem Green Inc  
0000146ESTKT01674214 DYNAMIC TRIO HOLDINGS LLC  
00000112ESWR37460976 Earth's Healing Inc  
00000063DCTB00283389 East Valley Patient Wellness Group Inc  
00000019ESXY11403163 East Valley Patient Wellness Group Inc

0000068ESZM96727661 Eba Holdings Inc.  
00000141ESYC13235553 FJM Group LLC  
00000126ESDQ50929013 Forever 46 Llc  
00000064ESAK09838873 Fort Consulting, Llc  
00000016ESBY46918805 Fort Mountain Consulting, Llc  
00000062ESGQ60020478 Fwa Inc  
00000034ESEZ92106085 G.T.L. Llc  
00000137ESPF58509627 Gila Dreams X, LLC  
00000108ESND56774062 Globe Pharmacy Inc  
00000082ESUB29429633 Green Desert Patient Center Of Peoria  
00000103ESEK38100955 Green Hills Patient Center Inc  
0000157ESTHZ07905975 Green Lightning, LLC  
00000113ESLZ23317951 Greenmed, Inc  
00000094ESMX02282810 Green Medicine  
00000061ESIG65334270 Greens Goddess Products, Inc  
00000081ESLT56066782 Green Sky Patient Center Of Scottsdale  
0000160ESTDY36165846 Grunge Free LLC  
00000020ESEN67630727 Healing Healthcare 3 Inc  
00000118ESDH66162163 Health For Life Inc  
00000032ESPT83532730 Herbal Wellness Center Inc  
00000007ESWD35270682 High Desert Healing Llc  
00000014ESNA15249640 High Desert Healing Llc  
0000151ESTVN87881223 Higher than High I LLC  
00000087ESWR93327597 High Mountain Health, Llc  
00000019DCGM00234427 Holistic Patient Wellness Group  
00000015ESEM68131310 Holistic Patient Wellness Group  
00000045ESYU34105986 Jamestown Center  
00000046ESTW28902560 Jamestown Center  
0000158ESTLH17620655 Joint Junkies I LLC  
0000147ESTXX54706468 Juicy Joint I LLC  
00000118DCKD00426097 Kannaboost Technology Inc  
00000048ESNO41782628 Kannaboost Technology Inc  
00000029ESAA16670843 K Group Partners Llc  
00000088ESUZ76069650 Kind Meds Inc  
00000005ESIN89499585 Kwerles Inc  
00000136ESTJ56415147 Lawrence Health Services LLC  
00000079ESTS64678211 Legacy & Co., Inc.  
0000156ESTDP70697204 Life Changers Investments LLC  
00000101ESZO30906924 M&T Retail Facility 1, LLC  
0000164ESTEB22806734 MCCSE214, LLC  
0000169ESTMB88870542 MCCSE240, LLC  
0000149ESTUL49249395 MCCSE29, LLC  
0000165ESTJX05511145 MCCSE82, LLC  
0000167ESTML86118201 MCD-SE Venture 25, LLC  
0000162ESTOS80671885 MCD-SE Venture 26, LLC  
00000010ESIR42914838 Medical Pain Relief Inc  
00000039ESEZ33667642 Medmar Tanque Verde Llc  
00000143ESKB17654619 MK Associates LLC  
00000100ESEC12878172 Mmj Apothecary  
00000098ESAA47054477 Mohave Cannabis Club 1, LLC

00000119ESKK32735375 Mohave Cannabis Club 2, LLC  
00000122ESRN95872973 Mohave Cannabis Club 3, LLC  
00000107ESVJ79465811 Mohave Cannabis Club 4, LLC  
00000017ESMI32133238 Mohave Valley Consulting, Llc  
00000058ESFA63267513 Natural Herbal Remedies Inc  
00000066ESUJ44186931 Natural Relief Clinic Inc  
00000073ESED95493026 Natural Relief Clinic Inc  
00000125ESMC92036121 Natural Remedy Patient Center  
00000031ESCS44452076 Nature's Healing Center Inc  
00000041ESLU31226658 Nature's Healing Center Inc  
00000075ESJK64208740 Nature's Wonder Inc  
00000056ESPE92908314 Nature Med Inc  
00000121ESBM38825533 Nirvana Enterprises AZ, LLC  
00000037ESIX56363099 Non Profit Patient Center Inc  
00000051ESYP04501588 Ocotillo Vista, Inc.  
00000065ESNW69665422 Organica Patient Group Inc  
00000018ESKD27426528 Pahana, Inc.  
00000086ESQZ01367420 Patient Alternative Relief Center, LLC  
00000004ESAN63639048 Patient Care Center 301, Inc.  
00000105ESDR54985961 Perpetual Healthcare, LLC  
00000047ESRJ75098505 Phoenix Relief Center Inc  
00000049ESUK39624376 Phytotherapeutics Of Tucson  
00000059ESZW76539792 Pinal County Wellness Center  
00000138ESOA91816349 Piper's Shop LLC  
0000159ESTFT57497963 Pleasant Plants I LLC  
00000109ESVM44878444 Ponderosa Botanical Care Inc  
00000050ESTO08528992 Pp Wellness Center  
00000130ESFL12611544 Purplemed Inc  
00000124ESOS02903622 Rainbow Collective Inc  
00000080ESNP00364439 Rch Wellness Center  
00000035ESBO39198288 Rjk Ventures, Inc.  
00000071ESFP14031510 Salubrious Wellness Clinic Inc  
00000057ESJG92466754 Sea Of Green Llc  
00000134ESWD58732580 Serenity Smoke, LLC  
00000093ESRF39774783 S Flower N Phoenix, Inc.  
00000028DCGV00174888 S Flower N Phoenix, Inc.  
0000166ESTNU15027116 S Flower SE 1, Inc  
0000163ESTSO81819209 S Flower SE 2, Inc.  
0000171ESTSC03605413 S Flower SE 3 Inc.  
0000152ESTNJ52349435 S Flower SE 4, Inc.  
0000172ESTFM12469613 Sherri Dunn, Llc  
00000055ESFL28376770 Sherri Dunn, Llc  
00000090ESFB63917979 Sixth Street Enterprises Inc  
00000092ESKW00353670 Sixth Street Enterprises Inc  
00000140ESDP54259308 Sonoran Flower LLC  
00000117ESPN93487198 Soothing Options  
00000111ESTX14447382 SSW Ventures, LLC  
00000123ESYS35386603 Superior Organics  
00000011ESVC04035599 Svaccha, Llc  
00000009ESJA48286920 Svaccha, Llc

0000161ESTOJ23023764 Swallowtail 3, LLC  
00000013ESHH20255089 Sweet 5, Llc  
00000089ESLW87335751 The Desert Valley Pharmacy Inc  
00000008ESJT20615662 The Giving Tree Wellness Center Of Mesa Inc  
00000023ESLL63816994 The Giving Tree Wellness Center Of North Phoenix Inc.  
00000120ESGW29293058 The Green Halo Llc  
00000074ESMJ87013698 The Healing Center Farmacy Llc  
00000115ESJB22990289 The Healing Center Wellness Center Llc  
00000099ESVM28064808 The Health Center Of Cochise Inc  
00000053ESYR15319850 The Kind Relief Inc  
00000084ESFH12297246 The Medicine Room Llc  
00000114ESQS66067289 Total Accountability Patient Care  
00000110ESBL46708127 Total Accountability Systems I Inc  
00000060ESTV86857950 Total Health & Wellness Inc  
00000021ESQX24132908 Total Health & Wellness Inc  
00000129ESRG43839179 Uncle Harry Inc  
00000072ESRF58078256 Valley Healing Group Inc  
00000085ESVF25061802 Valley Of The Sun Medical Dispensary, Inc.  
00000043ESPE02331128 Vending Logistics Llc  
00000063ESQI60809124 Verde Dispensary Inc  
00000083ESGB09219996 White Mountain Health Center Inc  
00000069ESPV40435704 Whoa Qc Inc  
00000097ESKC38985532 Wickenburg Alternative Medicine Llc  
0000168ESTBM41952754 Woodstock 1  
00000145ESNP12373673 Yuma County Dispensary LLC  
00000024ESUV84524312 Zonacare

**“ARIZONA DEPARTMENT OF HEALTH SERVICES’ WARNING: Marijuana use can be addictive and can impair an individual’s ability to drive a motor vehicle or operate heavy machinery. Marijuana smoke contains carcinogens and can lead to an increased risk for cancer, tachycardia, hypertension, heart attack, and lung infection. Marijuana use may affect the health of a pregnant woman and the unborn child. KEEP OUT OF REACH OF CHILDREN”**

**“Using marijuana during pregnancy could cause birth defects or other health issues to your unborn child.”**



# Certificate of Analysis

Laboratory Sample ID: TE50121005-001



**Production Method:** Alcohol (Non-Ethanol Extraction)  
**Harvest/Lot ID:** 712024-1  
**Batch#:** BR100SW-12  
**Manufacturing Date:** 2025-01-16 00:00:00  
**Lot Date :** 2025-01-16 00:00:00  
**Harvest Date:** 06/02/24  
**Sample Size Received:** 19.79 gram  
**Total Amount:** 1 units  
**Retail Product Size:** 17.77 gram  
**Retail Serving Size:** 18 gram  
**Servings:** 1  
**Ordered:** 01/17/25  
**Sampled:** 01/21/25  
**Sample Collection Time:** 01:43 AM  
**Completed:** 01/23/25  
**Revision Date:** 01/24/25

**PASSED**

Pages 1 of 3

Jan 24, 2025 | Baked Bros  
License # 00000005ESIN89499585  
2017 W Peoria  
Phoenix, AZ, 85029, US

**SAFETY RESULTS**

 Pesticides NOT TESTED	 Heavy Metals NOT TESTED	 Microbials <b>PASSED</b>	 Mycotoxins NOT TESTED	 Residuals Solvents NOT TESTED	 Filtration NOT TESTED	 Water Activity NOT TESTED	 Moisture NOT TESTED	 Terpenes NOT TESTED
----------------------------------------------------------------------------------------------------------------	------------------------------------------------------------------------------------------------------------------	-------------------------------------------------------------------------------------------------------------------	----------------------------------------------------------------------------------------------------------------	------------------------------------------------------------------------------------------------------------------------	-----------------------------------------------------------------------------------------------------------------	----------------------------------------------------------------------------------------------------------------------	----------------------------------------------------------------------------------------------------------------	----------------------------------------------------------------------------------------------------------------

**Cannabinoid** **PASSED**

 <b>Total THC</b> <b>0.6688%</b> Total THC/Container : 118.85 mg	 <b>Total CBD</b> <b>0.0016%</b> Total CBD/Container : 0.28 mg	 <b>Total Cannabinoids</b> <b>0.6933%</b> Total Cannabinoids/Container : 123.20 mg
----------------------------------------------------------------------------------------------------------------------------------------------------------	---------------------------------------------------------------------------------------------------------------------------------------------------------	-------------------------------------------------------------------------------------------------------------------------------------------------------------------------------

	D9-THC	THCA	CBD	CBDA	CBG	CBGA	CBN	D8-THC	THCV	CBDV	CBC
%	0.6688	ND	0.0016	ND	0.0087	ND	0.0071	ND	0.0043	ND	0.0028
mg/unit	118.846	ND	0.284	ND	1.546	ND	1.262	ND	0.764	ND	0.498
LOQ	0.0010	0.0010	0.0010	0.0010	0.0010	0.0010	0.0010	0.0010	0.0010	0.0010	0.0010
%											

Analyzed by: 312, 272, 333      Weight: 3.0385g      Extraction date: 01/21/25 14:23:55      Extracted by: 333

Analysis Method : SOP.T.30.500, SOP.T.30.031, SOP.T.40.031  
Analytical Batch : TE007346POT  
Instrument Used : TE-004 "Duke Leto" (Flower)      Batch Date : 01/21/25 14:21:39  
Analyzed Date : 01/22/25 12:06:43

Dilution : 40  
Reagent : N/A  
Consumables : N/A  
Pipette : N/A

Full spectrum cannabinoid analysis utilizing High Performance Liquid Chromatography with Photo Diode Array detector (HPLC-PDA) for analysis. (Methods: SOP.T.30.500 for sample homogenization, SOP.T.30.031 for sample prep, SOP.T.40.031 for analysis on Shimadzu LC-20X0 series HPLCs). Potency results for cannabis flower products are reported on an "as received" basis, without moisture correction.

This Kaycha Labs Certification shall not be reproduced, unless in its entirety, without written approval from Kaycha Labs. The results relate only to the material or product analyzed. ND=Not Detected, ppm=Parts Per Million, ppb=Parts Per Billion, RSD=Relative Standard Deviation. Limit of Detection (LOD) and Limit Of Quantitation (LOQ) are terms used to describe the smallest concentration that can be detected and reliably measured by an analytical procedure, respectively. Action Levels are State-determined thresholds based on the action limits published in Table 3.1 of 9 A.A.C. 17 and 9 A.A.C. 18. The Measurement of Uncertainty (MU) error is available from the lab upon request. The "Decision Rule" for pass/fail does not include the MU. Any calculated totals may contain rounding errors. Testing results were obtained according to requirements stated in QMS.100.010.AZ Quality Manual.

**Ariel Gonzales**  
Lab Director

State License #  
00000024LCMD66604568  
ISO 17025 Accreditation # 97164



Signature  
01/23/25



1231 W. Warner Road, Suite 105  
 Tempe, AZ, 85284, US  
 (480) 220-4470

Kaycha Labs

Brix Strawberry Watermelon 100mg Gummie  
 Hybrid  
 Matrix : Infused  
 Type: Soft Chew



# Certificate of Analysis

**PASSED**

**Baked Bros**

2017 W Peoria  
 Phoenix, AZ, 85029, US  
 Telephone: (623) 606-1970  
 Email: nathanmartinez@bakedbros.com  
 License #: 00000005ESIN89499585

Sample : TE50121005-001  
 Harvest/Lot ID: 712024-1  
 Lot Date : 01/16/25  
 Batch# : BR1005W-12  
 Sampled : 01/21/25  
 Ordered : 01/21/25

Sample Size Received : 19.79 gram  
 Total Amount : 1 units  
 Completed : 01/23/25 Expires: 01/24/26  
 Sample Method : SOP Client Method

Page 2 of 3

	<b>Microbial</b>	<b>PASSED</b>
--	------------------	---------------

Analyte	LOQ	Units	Result	Pass / Fail	Action Level
SALMONELLA SPP	0.0000		Not Present in 1g	PASS	
ESCHERICHIA COLI REC	10.0000	CFU/g	<10	PASS	100

Analyzed by: 87, 272, 333	Weight: 0.9226g	Extraction date: 01/23/25 09:52:00	Extracted by: 87
------------------------------	--------------------	---------------------------------------	---------------------

Analysis Method : SOP.T.40.056B, SOP.T.40.058.FL, SOP.T.40.208, SOP.T.40.209.AZ  
 Analytical Batch : TE007341MIC  
 Instrument Used : TE-234 "bioMerieux GENE-UP"      Batch Date : 01/21/25 12:06:22  
 Analyzed Date : 01/23/25 20:39:31

Dilution : 10  
 Reagent : 120924.33; 012125.R59  
 Consumables : N/A  
 Pipette : TE-053 SN:20E78952; TE-061 SN:20C35454; TE-062 SN:20C50491; TE-066 SN:20D56970; TE-069 SN:21B23920; TE-109 SN:20B18330; TE-256 Dispensette S Bottle Top Dispenser SN:20G36073; TE-258

This Kaycha Labs Certification shall not be reproduced, unless in its entirety, without written approval from Kaycha Labs. The results relate only to the material or product analyzed. ND=Not Detected, ppm=Parts Per Million, ppb=Parts Per Billion, RSD=Relative Standard Deviation. Limit of Detection (LOD) and Limit Of Quantitation (LOQ) are terms used to describe the smallest concentration that can be detected and reliably measured by an analytical procedure, respectively. Action Levels are State-determined thresholds based on the action limits published in Table 3.1 of 9 A.A.C. 17 and 9 A.A.C. 18. The Measurement of Uncertainty (MU) error is available from the lab upon request. The "Decision Rule" for pass/fail does not include the MU. Any calculated totals may contain rounding errors. Testing results were obtained according to requirements stated in QMS.100.010.AZ Quality Manual.

**Ariel Gonzales**  
 Lab Director

State License #  
 00000024LCMD66604568  
 ISO 17025 Accreditation # 97164

Signature  
 01/23/25



1231 W. Warner Road, Suite 105  
 Tempe, AZ, 85284, US  
 (480) 220-4470

**Kaycha Labs**

.....  
 Brix Strawberry Watermelon 100mg Gummie  
 Hybrid  
 Matrix : Infused  
 Type: Soft Chew



# Certificate of Analysis

**PASSED**

**Baked Bros**

2017 W Peoria  
 Phoenix, AZ, 85029, US  
**Telephone:** (623) 606-1970  
**Email:** nathanmartinez@bakedbros.com  
**License # :** 00000005ESIN8499585

**Sample :** TE50121005-001  
**Harvest/Lot ID:** 712024-1  
**Lot Date :** 01/16/25  
**Batch# :** BR1005W-12  
**Sampled :** 01/21/25  
**Ordered :** 01/21/25

**Sample Size Received :** 19.79 gram  
**Total Amount :** 1 units  
**Completed :** 01/23/25 **Expires:** 01/24/26  
**Sample Method :** SOP Client Method

Page 3 of 3

## COMMENTS

\* Confident Cannabis sample ID: 2501KLAZ0077.0354



\* Cannabinoid TE50121005-001POT  
 1 - V1:THCA

\* SRF Comments

**Lot IDs: 712024-1**  
**Use by Date: 1/16/2026**

This Kaycha Labs Certification shall not be reproduced, unless in its entirety, without written approval from Kaycha Labs. The results relate only to the material or product analyzed. ND=Not Detected, ppm=Parts Per Million, ppb=Parts Per Billion, RSD=Relative Standard Deviation. Limit of Detection (LOD) and Limit Of Quantitation (LOQ) are terms used to describe the smallest concentration that can be detected and reliably measured by an analytical procedure, respectively. Action Levels are State-determined thresholds based on the action limits published in Table 3.1 of 9 A.A.C. 17 and 9 A.A.C. 18. The Measurement of Uncertainty (MU) error is available from the lab upon request. The "Decision Rule" for pass/fail does not include the MU. Any calculated totals may contain rounding errors. Testing results were obtained according to requirements stated in QMS.100.010.AZ Quality Manual.

**Ariel Gonzales**

Lab Director

State License #  
 00000024LCMD66604568  
 ISO 17025 Accreditation # 97164

Signature  
 01/23/25



**SROAZ LLC**  
125 S Rockford  
Tempe, AZ 85281  
(440) 622-3519  
Lic#: 00000109ESVM44878444

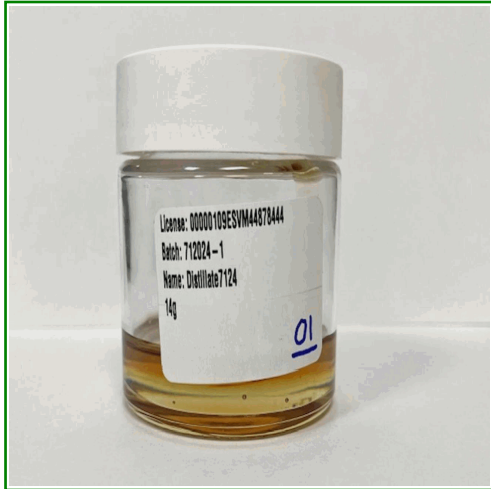
**Sample: S407012-01**  
CC ID#: 2407C4L0001.1840  
Lot#: N/A  
Batch#: 712024-1  
Batch Size: N/A  
Manufacture Date: 06/28/2024  
Harvest Date: 06/02/2024

**FINAL**

**Sample Name: Distillate7124**  
**Strain Name: Hybrid**  
**Matrix: Concentrates\_Extracts**  
**Amount Received: 138.7828 g**

**Sample Collected: 07/1/2024 13:00**  
**Sample Received: 07/03/2024 14:38**  
**Report Created: 07/09/2024 19:07**

**SAFETY**



<b>Microbials</b>  <b>PASS</b>	<b>Residual Solvents</b>  <b>PASS</b>	<b>Mycotoxins</b>  <b>PASS</b>	<b>Pesticides</b>  <b>PASS</b>
<b>Metals</b>  <b>PASS</b>			

**Terpenes**

**Total Terpenes (Q3)**

**Cannabinoid Results**

<b>90.1%</b> <b>Sum of Cannabinoids (Q3)</b>	<b>90.1%</b> <b>Total THC</b>	<b>&lt;LOQ</b> <b>Total CBD</b>	<b>RATIO</b> <b>1 : 0</b> <b>THC : CBD</b>
-------------------------------------------------	----------------------------------	------------------------------------	--------------------------------------------------

Total THC= THCA \* 0.877 + d9-THC  
Total CBD= CBDA \* 0.877 + CBD

**SROAZ LLC**

125 S Rockford  
Tempe, AZ 85281  
(440) 622-3519  
Lic#: 00000109ESVM44878444

**Sample: S407012-01**

CC ID#: 2407C4L0001.1840  
Lot#: N/A  
Batch#: 712024-1  
Batch Size: N/A  
Manufacture Date: 06/28/2024  
Harvest Date: 06/02/2024

**FINAL**

Sample Name: Distillate7124

Strain Name: Hybrid

Matrix: Concentrates\_Extracts

Amount Received: 138.7828 g

Sample Collected: 07/1/2024 13:00

Sample Received: 07/03/2024 14:38

Report Created: 07/09/2024 19:07

**Cannabinoids by HPLC-DAD - Compliance**

Date Analyzed: 07/09/2024 Analyst Initials: DRF SOP: C4-SOP-CHEM-003

Analyte	LOQ	Result	Result	Qualifier
	%	%	mg/g	
THCA	1.60	<LOQ	< LOQ	
d9-THC	1.60	90.1	901	
d8-THC	1.60	<LOQ	< LOQ	
CBDA	1.60	<LOQ	< LOQ	
CBD	1.60	<LOQ	< LOQ	
CBG	1.60	<LOQ	< LOQ	
CBN	1.60	<LOQ	< LOQ	
CBC	1.60	<LOQ	< LOQ	
Sum of Cannabinoids	1.60	90.1	901	Q3
Total THC	1.60	90.1	901	
Total CBD	1.60	<LOQ	< LOQ	
Total Cannabinoids	1.60	90.1	901	Q3

Total THC= THCA \* 0.877 + d9-THC. Total CBD= CBDA \* 0.877 + CBD.

**SROAZ LLC**  
125 S Rockford  
Tempe, AZ 85281  
(440) 622-3519  
Lic#: 00000109ESVM44878444

**Sample: S407012-01**  
CC ID#: 2407C4L0001.1840  
Lot#: N/A  
Batch#: 712024-1  
Batch Size: N/A  
Manufacture Date: 06/28/2024  
Harvest Date: 06/02/2024

**FINAL**

**Sample Name: Distillate7124**  
Strain Name: Hybrid  
Matrix: Concentrates\_Extracts  
Amount Received: 138.7828 g

Sample Collected: 07/1/2024 13:00  
Sample Received: 07/03/2024 14:38  
Report Created: 07/09/2024 19:07

**Pesticides by LC/MS/MS - Compliance**

**Pass**

Date Analyzed: 07/06/2024 Analyst Initials: JCB SOP: C4-SOP-CHEM-006

Analyte	LOQ	Limit	Result	Qualifier	Status	Analyte	LOQ	Limit	Result	Qualifier	Status
	ppm	ppm	ppm				ppm	ppm	ppm		
Abamectin	0.119	0.5	<LOQ		Pass	Imazalil	0.099	0.2	<LOQ		Pass
Acephate	0.099	0.4	<LOQ		Pass	Imidacloprid	0.099	0.4	<LOQ		Pass
Acetamiprid	0.050	0.2	<LOQ		Pass	Kresoxim-methyl	0.099	0.4	<LOQ		Pass
Aldicarb	0.099	0.4	<LOQ		Pass	Malathion	0.050	0.2	<LOQ		Pass
Azoxystrobin	0.050	0.2	<LOQ		Pass	Metalaxyl	0.099	0.2	<LOQ		Pass
Bifenazate	0.050	0.2	<LOQ	L1	Pass	Methiocarb	0.050	0.2	<LOQ		Pass
Bifenthrin	0.050	0.2	<LOQ		Pass	Methomyl	0.099	0.4	<LOQ	V1	Pass
Boscalid	0.099	0.4	<LOQ		Pass	Myclobutanil	0.050	0.2	<LOQ		Pass
Carbaryl	0.050	0.2	<LOQ		Pass	Naled	0.124	0.5	<LOQ		Pass
Carbofuran	0.050	0.2	<LOQ		Pass	Oxamyl	0.249	1.0	<LOQ		Pass
Chlorantraniliprole	0.050	0.2	<LOQ		Pass	Paclobutrazol	0.099	0.4	<LOQ		Pass
Chlorfenapyr	0.497	1.0	<LOQ	R1, V1	Pass	Permethrins	0.050	0.2	<LOQ		Pass
Chlorpyrifos	0.050	0.2	<LOQ		Pass	Phosmet	0.050	0.2	<LOQ		Pass
Clofentezine	0.050	0.2	<LOQ		Pass	Piperonyl butoxide	0.497	2.0	<LOQ		Pass
Cyfluthrin	0.497	1.0	<LOQ		Pass	Prallethrin	0.099	0.2	<LOQ		Pass
Cypermethrin	0.249	1.0	<LOQ		Pass	Propiconazole	0.099	0.4	<LOQ		Pass
Daminozide	0.497	1.0	<LOQ		Pass	Propoxur	0.050	0.2	<LOQ		Pass
Diazinon	0.050	0.2	<LOQ		Pass	Pyrethrins	0.277	1.0	<LOQ		Pass
Dichlorvos	0.050	0.1	<LOQ		Pass	Pyridaben	0.050	0.2	<LOQ		Pass
Dimethoate	0.050	0.2	<LOQ		Pass	Spinosad	0.050	0.2	<LOQ	I1	Pass
Ethoprophos	0.050	0.2	<LOQ		Pass	Spiromesifen	0.050	0.2	<LOQ		Pass
Etofenprox	0.099	0.4	<LOQ		Pass	Spirotetramat	0.050	0.2	<LOQ		Pass
Etoxazole	0.050	0.2	<LOQ		Pass	Spiroxamine	0.099	0.4	<LOQ		Pass
Fenoxycarb	0.050	0.2	<LOQ	I1, V1	Pass	Tebuconazole	0.099	0.4	<LOQ		Pass
Fenpyroximate	0.099	0.4	<LOQ		Pass	Thiacloprid	0.050	0.2	<LOQ		Pass
Fipronil	0.099	0.4	<LOQ	V1	Pass	Thiamethoxam	0.050	0.2	<LOQ		Pass
Fonicamid	0.249	1.0	<LOQ		Pass	Trifloxystrobin	0.050	0.2	<LOQ		Pass
Fludioxonil	0.099	0.4	<LOQ		Pass						
Hexythiazox	0.249	1.0	<LOQ		Pass						

**SROAZ LLC**  
125 S Rockford  
Tempe, AZ 85281  
(440) 622-3519  
Lic#: 00000109ESVM44878444

**Sample: S407012-01**  
CC ID#: 2407C4L0001.1840  
Lot#: N/A  
Batch#: 712024-1  
Batch Size: N/A  
Manufacture Date: 06/28/2024  
Harvest Date: 06/02/2024

**FINAL**

**Sample Name:** Distillate7124  
**Strain Name:** Hybrid  
**Matrix:** Concentrates\_Extracts  
**Amount Received:** 138.7828 g

**Sample Collected:** 07/1/2024 13:00  
**Sample Received:** 07/03/2024 14:38  
**Report Created:** 07/09/2024 19:07

**Metals by ICP-MS - Compliance**

**Pass**

Date Analyzed: 07/08/2024 Analyst Initials: JEK SOP: C4-SOP-CHEM-008

Analyte	LOQ	Limit	Result	Qualifier	Status
	ppm	ppm	ppm		
Arsenic	0.100	0.4	<LOQ		Pass
Cadmium	0.100	0.4	<LOQ		Pass
Lead	0.401	1.0	<LOQ		Pass
Mercury	0.040	0.2	<LOQ		Pass

**Mycotoxins by ELISA- Compliance**

**Pass**

Date Analyzed: 07/08/2024 Analyst Initials: DHV SOP: C4-SOP-MICRO-014

Analyte	LOQ	Limit	Result	Qualifier	Status
	ppb	ppb	ppb		
Aflatoxins Total	2.00	20	<LOQ		Pass
Ochratoxin A	4.00	20	<LOQ		Pass

Total Aflatoxins includes Aflatoxins B1, B2, G1, and G2.

**SROAZ LLC**  
125 S Rockford  
Tempe, AZ 85281  
(440) 622-3519  
Lic#: 00000109ESVM44878444

**Sample: S407012-01**  
CC ID#: 2407C4L0001.1840  
Lot#: N/A  
Batch#: 712024-1  
Batch Size: N/A  
Manufacture Date: 06/28/2024  
Harvest Date: 06/02/2024

**FINAL**

**Sample Name:** Distillate7124  
**Strain Name:** Hybrid  
**Matrix:** Concentrates\_Extracts  
**Amount Received:** 138.7828 g

**Sample Collected:** 07/1/2024 13:00  
**Sample Received:** 07/03/2024 14:38  
**Report Created:** 07/09/2024 19:07

**Microbials**

**Pass**

**E. coli by 3M Petrifilm- Compliance**

Date Analyzed: 07/09/2024 Analyst Initials: DHV SOP: C4-SOP-MICRO-010

Analyte	LOQ	Limit	Result	Qualifier Status
	CFU/g	CFU/g	CFU/g	
<i>E. coli</i>	10	100	<10	Pass

**Aspergillus and Salmonella by qPCR - Compliance**

Date Analyzed: 07/09/2024 Analyst Initials: DHV SOP: C4-SOP-MICRO-013

Analyte	Result	Qualifier Status
	in one gram	
<i>Salmonella spp.</i>	Not Detected	Pass
<i>Aspergillus</i>	Not Detected	Pass

Aspergillus includes species flavus, fumigatus, niger, and terreus. Salmonella and Aspergillus by Medicinal Genomics.

**SROAZ LLC**  
125 S Rockford  
Tempe, AZ 85281  
(440) 622-3519  
Lic#: 00000109ESVM44878444

**FINAL**

**Sample: S407012-01**  
CC ID#: 2407C4L0001.1840  
Lot#: N/A  
Batch#: 712024-1  
Batch Size: N/A  
Manufacture Date: 06/28/2024  
Harvest Date: 06/02/2024

**Sample Name: Distillate7124**  
Strain Name: Hybrid  
Matrix: Concentrates\_Extracts  
Amount Received: 138.7828 g

Sample Collected: 07/1/2024 13:00  
Sample Received: 07/03/2024 14:38  
Report Created: 07/09/2024 19:07

**Residual Solvents by Headspace GC/MS - Compliance**

**Pass**

Date Analyzed: 07/05/2024 Analyst Initials: HSP SOP: C4-SOP-CHEM-005

Analyte	LOD	LOQ	Limit	Result	Qualifier	Status	Analyte	LOD	LOQ	Limit	Result	Qualifier	Status
	ppm	ppm		ppm				ppm	ppm				
Acetone		106.4	1000	<LOQ		Pass	2,2-Dimethylbutane		34.04		<LOQ		
Acetonitrile		42.55	410	<LOQ		Pass	2-methylpentane/ 2,3-dimethylbutane		68.09		<LOQ		
Benzene		0.851	2	<LOQ		Pass	2-Propanol (IPA)		531.9	5000	<LOQ		Pass
Butanes		531.9	5000	<LOQ	L1	Pass	Isopropyl acetate		531.9	5000	<LOQ		Pass
<i>n-Butane</i>		531.9		<LOQ	L1		Methanol		319.1	3000	<LOQ	L1	Pass
<i>iso-Butane</i>		531.9		<LOQ	L1		Pentanes		531.9	5000	<LOQ		Pass
Chloroform		12.77	60	<LOQ		Pass	<i>n-Pentane</i>		531.9		<LOQ	L1	
Dichloromethane		63.83	600	<LOQ		Pass	<i>iso-pentane</i>		531.9		<LOQ		
Ethanol		531.9	5000	<LOQ		Pass	<i>neo-Pentane</i>		531.9		<LOQ	L1	
Ethyl acetate		531.9	5000	<LOQ	L1	Pass	Toluene		97.87	890	<LOQ		Pass
Diethyl Ether		531.9	5000	<LOQ		Pass	Xylenes		234.0	2170	<LOQ		Pass
n-Heptane		531.9	5000	<LOQ		Pass	<i>m/p-Xylene</i>		468.1		<LOQ	R1	
Hexanes		34.04	290	<LOQ		Pass	<i>o-Xylene</i>		234.0		<LOQ		
<i>n-Hexane</i>		34.04		<LOQ	R1		<i>Ethyl benzene</i>		234.0		<LOQ		
<i>3-Methylpentane</i>		34.04		<LOQ									

**SROAZ LLC**  
125 S Rockford  
Tempe, AZ 85281  
(440) 622-3519  
Lic#: 00000109ESVM44878444

**Sample: S407012-01**  
CC ID#: 2407C4L0001.1840  
Lot#: N/A  
Batch#: 712024-1  
Batch Size: N/A  
Manufacture Date: 06/28/2024  
Harvest Date: 06/02/2024

**FINAL**

**Sample Name:** Distillate7124  
**Strain Name:** Hybrid  
**Matrix:** Concentrates\_Extracts  
**Amount Received:** 138.7828 g

**Sample Collected:** 07/1/2024 13:00  
**Sample Received:** 07/03/2024 14:38  
**Report Created:** 07/09/2024 19:07

**Notes and Definitions**

Item	Definition
D1	LOQ and sample results were adjusted to reflect sample dilution.
I1	Interference. Relative intensity of a characteristic ion in the sample analyte exceeded 30% of the relative intensity in the reference spectrum.
L1	The percent recovery of the LCS was above the control limit for the test but analyte was not detected above the Action Limit in Table 3.1.
Q3	Testing result is for informational purposes only and cannot be used to satisfy dispensary testing requirements in R9-17-317.01(A) or labeling requirements in R9-17-317. Testing result is not accredited under ISO 17025.
R1	The RPD for the LCS/LCSD pair exceeded 20% but recoveries were within control limits.
V1	The recovery from initial or continuing calibration verification standards is greater than the acceptance limits, but the sample's target analytes were not detected above the maximum allowable concentrations in Table 3.1 for the analytes in the sample.
< LOQ	Results below the Limit of Quantification.
ND	Not Detected
Limit	Maximum allowable concentration as defined by Table 3.1 in Arizona Administrative code (A.A.C.) Title 9, Chapter 17
CFU/g	Colony forming units per gram
ppm	Parts per million
ppb	Parts per billion
NT	Not Tested
Sum of Cannabinoids = THCA + d9-THC + CBDA + CBD + d8-THC + CBG + CBN + CBC	
Total Cannabinoids = Total THC + Total CBD + d8-THC + CBG + CBN + CBC	

**CASE NARRATIVE**

**ARIZONA DEPARTMENT OF HEALTH SERVICES' WARNING:**

Marijuana use can be addictive and can impair an individual's ability to drive a motor vehicle or operate heavy machinery. Marijuana smoke contains carcinogens and can lead to an increased risk for cancer, tachycardia, hypertension, heart attack, and lung infection. Marijuana use may affect the health of a pregnant woman and the unborn child. KEEP OUT OF REACH OF CHILDREN. Using Marijuana during pregnancy could cause birth defects or other health issues to your unborn child.

**Name: Distillate 7124**

Batch ID: 712024-1

Batch Harvest Date: 06/02/2024

Batch Manufacture Date: 06/28/2024

Form: Distillate

**Harvested by: P1 Capital Group LLC 00000100DCWU0087159**

Flower Input: Blue RTZ: 0508F4.2BRTZ (HRV 5/8/24); King Louis XIII: 0602FR.2kGL (HRV 06/02/24); Mac Daddy: 0508F4.2MDY (HRV 05/08/24)

Extracted by:

TOTAL ACCOUNTABILITY PATIENT CARE INC 0000025DCPT0084389

Extraction Method: Alcohol

**Using marijuana during pregnancy could cause birth defects or other health issues to your unborn child.**